

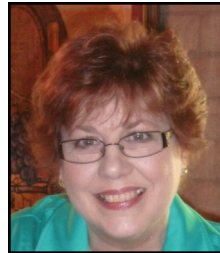
Camellia Times



camelliasocietyofsacramento.org

INSIDE THIS ISSUE:

<i>Executive Board</i>	2
<i>Advisory Board</i>	2
<i>Program for the Month</i>	3
<i>Through the Garden</i>	3
<i>Meeting Dates</i>	3
<i>Plant Raffle</i>	3
<i>Camellia Culture Corner</i>	4
<i>This N That</i>	4
<i>Dues</i>	4
<i>Rosalie Yee Scholarship</i>	4
<i>Show Dates</i>	5
<i>Button & Photo Contest</i>	6
<i>Hostess Help</i>	7
<i>Board Meeting Dates</i>	7
<i>Poem Contest</i>	7
<i>Newsletter Information</i>	7



Happy New Year! Good-bye 2011 and welcome 2012. While 2011 was a challenging year for some, I look forward to 2012 as a year of abundance and joy. I feel so privileged to be a part of such a great group of fellow Camellia lovers. To keep our camellia group growing, we need your participation. Bring a friend to one of our meetings, volunteer to serve on a committee, help with refreshments, help with the set up of our show in March, or let me know what you are interested in and I will be happy to give you suggestions. A BIG "thank you" to our Executive and Advisory

PRESIDENT'S MESSAGE

Board members. This month, the nominations committee will be making recommendations for a slate of officers for next year. They welcome your suggestions.

Our camellia plants are starting to "pop" with color. It is time to start getting ready for the Camellia shows. If you haven't been to one of the shows other than Sacramento, try one for fun. See our website for show schedules. Don't forget to keep your plants watered and protect them from these cold freezing mornings. January starts our mini shows during our meetings. Bring your

camellia blooms and share their beauty with us. This is a great time to get tips from our experts on how to show your flowers.

I wish you all many "blue ribbons" this new year not just at the camellia shows, but in your daily lives.

Your Camellia friend,
Carol Schanz

In my garden, after a rainfall, you can faintly hear the breaking open of new blooms.
Truman Capote

**Be sure to check out our website
www.camelliasocietyofsacramento.org.
It has been given a new look for the New Year!**

MEETING DATE:

- Monday,
January 23rd, 2012
7:00 p.m. sharp
- Lutheran Church
1900 Potrero Way,
Sacramento



HAPPY NEW YEAR!

LAST NOTICE FOR ANNUAL DUES

Many of our members have paid their 2011-2012 dues. If you are one of our members who has **NOT** yet paid your dues, they are now **over due!**

Please remit your checks, payable to the **Camellia Society of Sacramento**

Send to Arlene Morrison
2712 Ripon Court
Sacramento, CA 95826



CAMELLIA SOCIETY OF SACRAMENTO 2011-2012 EXECUTIVE BOARD

President	Carol Schanz	447-1969
1st Vice President	Don Lesmeister	967-8420
2nd Vice President	Gary Schanz	447-1969
Recording Secretary	Joan Lesmeister	967-8420
Corresponding Secretary	Julie Vierra	371-2174
Treasurer	Joanne Logan	434-8618
Historian	Ron Morrison	383-7005
NCCC Rep	Bob Logan	434-8618

CAMELLIA SOCIETY OF SACRAMENTO 2011-12 ADVISORY BOARD

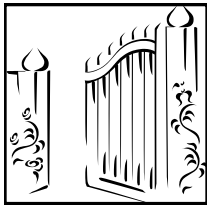
ACS/ICS Representative	Don Bergamini
E-Team	Shellie-Rae Leverett
Education, Research & Science	Don Lesmeister
Greeter	Ann Crowder
Hospitality	Susanne Dell
Meeting Bloom Competition	Ron Morrison
Membership	Arlene Morrison
Past President	Joan Lesmeister
Show Chairmen	Don Lesmeister, Bob Logan, Gary Schanz
Sunshine	Eleanore Biggs
Ways & Means	Julie Vierra, LuAnn Watkins
Nominations	Bob Christopher
Website	Shellie-Rae, Julie & Joan

~JANUARY PROGRAM~

Don Lesmeister will be our guest speaker, speaking on how to get ready for our Show. He will have great tips on how to get your blooms to the show in one piece. There are many things to do in order to enter your blooms, so it's going to be a good informative program...don't miss it!

- READY...SET...BLOOM!!**
- Clothespins to pin back blooms
 - Cups to set blooms in (Smart & Final)
 - Boxes to put blooms in...come to the meeting to get all the tips!

We have received a limited number of Camellia-Azalea plants from Nuccio's this year. The price is \$35 per two gallon plant. See Gary at the January meeting!



Through the Garden Gate—Jackie Randall

January: Ila Collin will show us how her garden grows!

MEETING DATES FOR 2011-2012

Monday, October 24th—Don Bergamini on 2010 Winners

Monday, November 28th—Don Lesmeister talking on how to grow camellias from seeds

Monday, December 19th—Holiday Potluck & Fun

Monday, January 23rd—How to Get Ready for the Show by Don Lesmeister

Monday, February 27th—Mini-Show & YOU be the Judge

Monday, March 26th—End of Year Program by Julie, LuAnn & Cindy

Saturday, April 28th (End of Year Luncheon)—Installation of Officers, Silent Auction, Plant Raffle & much more!



PLANT RAFFLE FOR JANUARY

- Door Prize: Carter's Sunburst
 Special: Jack Mandarin
 Regulars: Fircone Var.
 Black Magic
 Lady Laura
 Phyllis Hunt
 Island Sunset



Gary will have our plant list from Nuccio's at the January meeting. These are the plants we sell at our Show. **Members** get a discount!



Regular tickets are \$1 or 6 for \$5

Special plant tickets are \$2 each



DUES ARE NOW DUE AND PAYABLE. THIS YEAR THEY WILL BE:

- **\$10 FOR NEWS-LETTER TO BE SENT E-MAIL;**
- **\$15 FOR SENDING NEWSLETTER VIA SNAIL MAIL;**
- **\$20 FOR SUSTAINING MEMBERSHIP.**

IF YOU ARE A NEW MEMBER AND PAID AT OUR SHOW, YOUR DUES WILL NOT CHANGE THIS YEAR.

Membership applications are on our website. Just print out and send to Arlene!



The deadline for scholarship applications is:

MARCH 1, 2012

CAMELLIA CULTURE CORNER

BY DON LESMEISTER, OUR GUEST CULTURE GUY!

This has been the second coldest average December since we have been growing Camellias. But don't think the cold weather is over. Records show that in many/most/a lot of years, a cold December is followed by a cold January. So keep your eyes and ears tuned to the weather reports and be sure to water before a 32 degree or lower evening. Remember, it takes 2+ hours after plants are watered before they absorb the water. But don't water when the temperature has already reached freezing.

The impact of the previous cold weather is going to appear in the next couple of weeks. Plants that were not watered sufficiently before the freeze will start to drop their buds (primarily Reticulatas and container grown plants). Also, blooms will

probably be a little later this year, so be patient.

Also, check your plants and do your final disbudding. The Hybrids like to set buds as soon as your back is turned. If you have containerized plants that were in a lot of shade during the cold spell, you can start moving them to a brighter area to motivate them to bloom a little faster. Most Camellia growers have different "Gibbing" schedules. In this area, the next week or so is about as late as it can be done with good results.

Get ready for the shows. Remember, the first show is in Napa on February 5th. Cotton is getting very expensive, but is still reasonably priced via the internet. Some people are now using tissue as a less expensive alternative. Cups are readily available at many local specialty stores. Most

florists have small packages of bloom preservative, but you may have to do some searching to find large containers. Seven-up or sugar can be used, but is VERY sticky. Our Society will have cups available for you, and I will bring entry cards to the next meeting.

We hope ALL of you are excited about the next few months...the plants will start blooming and we will be able to see why we all grow Camellias!

Your Camellia Friend,
Don



THIS 'N THAT

A new publication from the Southern California Camellia Society is available for purchase at our meetings. "Sun Camellias" is all about those fall blooming camellias "Sasanquas". The cost is \$10.00. It's an outstanding publication. See Gary at the meeting.

~~~~~

**2012 Rosalie Yee College Scholarship**

***The 2012 Rosalie Yee College Scholarship application will be available at our October through February meetings. The deadline is March 1, 2012. See Gary or Carol***

**UPCOMING SHOW DATES—  
2012 NORTHERN CALIFORNIA SHOW SCHEDULE  
MARK YOUR CALENDARS!**

|               |                                                                                                                                                                                        |
|---------------|----------------------------------------------------------------------------------------------------------------------------------------------------------------------------------------|
| February 4    | <i>Napa Camellia Society Show</i><br>Napa Senior Center, 1500 Jefferson Street, Napa, CA<br>Contact: Nancy McGowan-Russell, 707-545-7546                                               |
| February 11   | <b><i>Open—No Show</i></b>                                                                                                                                                             |
| February 18   | <i>San Francisco Peninsula Camellia Society Show</i><br>CAB Community Activities Building, 1400 Roosevelt Avenue<br>Redwood City, CA<br>Contact: Linda Kancev, 650-574-1220            |
| February 25   | <i>Camellia Society of Santa Clara County Show</i><br>Community Recreation Center, 969 Kiely Blvd., Santa Clara, CA<br>Contact: John Mendoza, 408-249-5696                             |
| March 3 & 4   | <i>Camellia Society of Sacramento Show</i><br>Memorial Auditorium, 1515 J Street, Sacramento, CA<br>Contact: Carol Schanz, 916-447-1969 or Don Lesmeister, 916-967- 8420               |
| March 10      | <i>Northern California Camellia Society Show</i><br>First Baptist Church, 2336 Buena Vista Ave., Walnut Creek, CA<br>Contact: Don Bergamini, 925-229-0775 or Bob Ehrhart, 925-937-0188 |
| March 17 & 18 | <i>Camellia Society of Modesto Show</i><br>Ernest & Julio Gallo Administrative Building,, Modesto, CA<br>Contact: Pete Warner, 209-576-0831 or Tony Miranda, 209-526-2197              |
| March 24      | <b><i>Open-No Show</i></b>                                                                                                                                                             |
| March 31      | <i>Mini Show, Broadway Plaza, Walnut Creek, CA</i><br>Contact: Don Bergamini, 925-229-0775 or Bob Ehrhart, 925-937-0188                                                                |



*Start thinking of how you can help at our Show in March! We start setting up on Friday at 9 in the morning and work till we are done...then on Saturday, after we all put our camellias out, we will need help with the Judge's luncheon, cleaning up after judging, helping with plant sales, the Information Booth, and just greeting guests who come in to take a peek at our beautiful camellias. The Hostess Table will need help handing out programs and selling buttons. On Sunday afternoon we need all hands on deck to tear down the show...that's the easy part! Maybe the Gov will show up again!*

## BUTTON CONTEST WINNERS!

We welcomed our button contest winners, Joanne Tsukamoto, and the third place winner, Karen Booth to our December meeting. We acknowledged their talents and presented them with their winning checks. Below is a picture of them. Both have said they will enter again next year! Good luck to them both! We hope they continue to be interested in our Society. Joanne's picture with her button drawing were submitted to Debbie Arrington of the Sacramento Bee. Hopefully she will run the article before our Show to get some interest in our contest and our Show in March!



## PHOTO CONTEST



*Start looking around for some camellia shots for our Show! The categories this year are:*

- Section #1. Best Single Camellia
- Section #2. Best Camellia(s) in a landscape
- Section #3. Best Camellia(s) with a child or pet in the photo
- Section #4. Best Camellia(s) with adult(s) in the photo
- Section #5. Humorous Camellia photo

### **RULES:**

1. Contestants must be amateur photographers & a member in good standing of any Camellia Society.
2. Contestants may enter in any 4 of the 5 categories. Please, only one entry per Family in each category.
3. All entries must be **8 x 10**, vertical or horizontal, and displayed in an **11 x 14 Black mat**. (Mats available at art stores, Michael's photo shops, etc.)
4. Entries must have the photographer's name, address & phone number on the back of each photo. It should not be visible from the front.
5. Contestants need to fill out a Camellia entry card to submit with each photo. These are completed the same way as if you were entering a bloom. Example: Front of card: Section No 1, Variety Single Bloom. Inside of card need only be exhibitors name and address.
6. All photos, with completed entry cards, should be placed in the correct photo section by **10:30 a.m., Saturday, March 3, 2012**.
7. Photos will be judged on the overall quality of the composition with emphasis on the Camellia bloom(s).



### *Hostess Help*

*If you can help with the monthly snacks, please see Susanne Dell at our meetings or give her a call at 916-474-0356! Thanks!*

Thanks to everyone who brought their special dishes to our December potluck! Everything was DELICIOUS!

## BOARD MEETING DATES ALL MEMBERS ARE WELCOME TO ATTEND!

|                  |                           |
|------------------|---------------------------|
| January 3, 2012  | Helmuth & Leone Wildemann |
| February 7, 2012 | Ron & Arlene Morrison     |
| March 6, 2012    | Julie Vierra              |
| April 3, 2012    | Bob & Joanne Logan        |



The Nominating Committee met at the January 3rd board meeting to come up with board members for the 2012-2013 camellia season. They have a tentative slate of officers, but if you have someone in mind, come to the meeting and recommend him or her. We are open for suggestions!



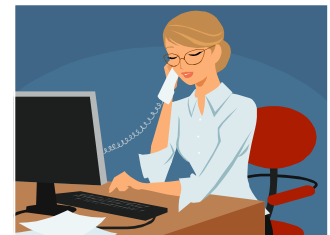
### *POEM CONTEST FOR 2012*

*Once again we will have our poem contest. Pen a poem and give it to one of the board members. He/she will give it to the people who will be judging the poem contest. At the April Luncheon we will announce the winner.*

### **Newsletter Information**

Articles for the Camellia Times are due at the board meeting date, the first Tuesday of every month. If you have questions or ideas, please just call or email me.

- Julie Vierra
- 916-371-2174
- [j4sfgiants@sbcglobal.net](mailto:j4sfgiants@sbcglobal.net)





*Camellia Society of Sacramento*  
*C/O 1048 Longcroft Street*  
*West Sacramento, Ca 95691*