

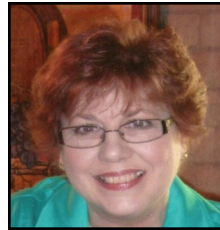
Camellia Times



camelliasocietyofsacramento.org

INSIDE THIS ISSUE:

<i>Executive Board</i>	2
<i>Advisory Board</i>	2
<i>Program for the Month</i>	3
<i>Through the Garden</i>	3
<i>Meeting Dates</i>	3
<i>Plant Raffle</i>	3
<i>Camellia Culture Corner</i>	4
<i>This N That</i>	4
<i>Dues</i>	4
<i>Rosalie Yee Scholarship</i>	4
<i>Show Dates</i>	5
<i>Photo & Poem Contests</i>	6
<i>Hostess Help</i>	7
<i>Board Meeting Dates</i>	7
<i>Nominating Committee</i>	7
<i>Newsletter Information</i>	7



PRESIDENT'S MESSAGE

What a wonderful time of the year. The camellias are a bloomin'. The colors are amazing. It is "Show Time"! In some ways, the Camellia Season is like Christmas. I wait all year for the blooms to pop open and reveal the beautiful gift of the camellia blossom. The first show in Northern California was February 4th, in Napa. It was a small but beautiful show and a great reunion with camellia friends. To me the real show is enjoying the camellias all over Sacramento and surrounding areas that are just happy to be blooming in someone's yard.

not sure about the name of a flower, bring it to the mini show. Our flower experts have more time to identify the flowers. Sample entry cards with instructions will be available. Prizes will be awarded. Bring a friend to the meeting and share a fun evening learning more about camellias.

Don't forget we are also having a photo contest at the show in March. And those of you who like to write poetry, sharpen those pencils. Poetry entries must be submitted no later than April 1. The winner will be announced at our luncheon in April. Sorry, but only 3 entries per person for the poems.

Are you interested in helping with our camellia show in March? Contact Don Lesmeister, Gary Schanz or Bob Logan to find out where help is needed. We need help with set up on Friday morning and tear down, Sunday evening, March 4th. A big thank you to all the show committees chairpersons and committee members who have already been working hard.

See you soon!

Carol Schanz,
President

Every day may not be good, but there's something good in every day.
Author Unknown

MEETING DATE:

- Monday,
February 27, 2012
7:00 p.m. sharp
- Lutheran Church
1900 Potrero Way,
Sacramento

Be sure to check out our website!
www.camelliasocietyofsacramento.org.
We are always updating, so check back often!



JUDGES/CAMELLIA FRIENDS LUNCHEON AT OUR SHOW!

It's just not for judges anymore!! If you would like to attend the luncheon, please let Joanne Logan who is signing judges up, or Julie Vierra know so we can sign you up for it. All you need is \$20, preferably **the sooner the better** so we can put you on the guest list. Once again Burke's Family Catering will be doing our catering. They did a wonderful job last year. We will be having salad, beef tips with gravy, baked chicken, garlic mashed potatoes, rolls, and two desserts. Coffee, sodas and water will be provided. Call Julie: 916-371-2174. I'll put you on the list.



CAMELLIA SOCIETY OF SACRAMENTO 2011-2012 EXECUTIVE BOARD

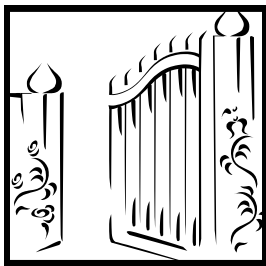
President	Carol Schanz	447-1969
1st Vice President	Don Lesmeister	967-8420
2nd Vice President	Gary Schanz	447-1969
Recording Secretary	Joan Lesmeister	967-8420
Corresponding Secretary	Julie Vierra	371-2174
Treasurer	Joanne Logan	434-8618
Historian	Ron Morrison	383-7005
NCCC Rep	Bob Logan	434-8618

CAMELLIA SOCIETY OF SACRAMENTO 2011-12 ADVISORY BOARD

ACS/ICS Representative	Don Bergamini
E-Team	Shellie-Rae Leverett
Education, Research & Science	Don Lesmeister
Greeter	Ann Crowder
Hospitality	Susanne Dell
Meeting Bloom Competition	Ron Morrison
Membership	Arlene Morrison
Past President	Joan Lesmeister
Show Chairmen	Don Lesmeister, Bob Logan, Gary Schanz
Sunshine	Eleanore Biggs
Ways & Means	Julie Vierra, LuAnn Watkins
Nominations	Bob Christopher
Website	Shellie-Rae, Julie & Joan

~ FEBRUARY PROGRAM ~

This is a fun-filled meeting...bring all your blooms from home, enter them, then YOU get to be a judge for the evening!! Then the top 3 winners actually win a trophy for being the best! Just like at a regular show! So bring your blooms and practice for the Very Big Show in March! You will get tips from the regular circuit judges and exhibitors, so come armed with questions. If you don't know the name of any of your camellias, bring the bloom(s) to the meeting and we will do our best to identify them. We will have more time at the Show. meeting than at the



Through the Garden Gate—Jackie Randall
Our February meeting will feature LuAnn Watkins who will show us how her garden grows!

2012 MEETING DATES

Monday, February 27th—Mini-Show & YOU be the Judge
Monday, March 26th—End of Year Program by Julie, LuAnn & Cindy
Saturday, April 28th (End of Year Luncheon)—Installation of Officers, Silent Auction, Plant Raffle & much more!



PLANT RAFFLE FOR JANUARY

Door Prize: Magnoliaflora
 Special: Adorable
 Regulars: Lemon Drop
 Firedance Var.
 Junior Prom
 Harold Paige
 Lucky Star



Gary will have our plant list from Nuccio's at the February meeting. These are the plants we sell at our Show. **Members** get a discount!



Regular tickets are \$1 or 6 for \$5
Special plant tickets are \$2 each



DUES ARE NOW DUE AND PAYABLE. THIS YEAR THEY WILL BE:

- **\$10 FOR NEWS-LETTER TO BE SENT E-MAIL;**
- **\$15 FOR SENDING NEWSLETTER VIA SNAIL MAIL;**
- **\$20 FOR SUSTAINING MEMBERSHIP.**

IF YOU ARE A NEW MEMBER AND PAID AT OUR SHOW, YOUR DUES WILL NOT CHANGE THIS YEAR.

Membership applications are on our website. Just print out and send to Arlene!



The deadline for scholarship applications is:

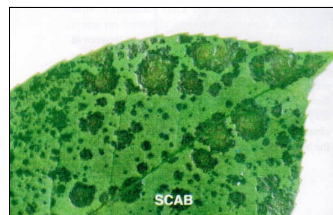
MARCH 1, 2012

**CAMELLIA CULTURE CORNER
BY BOB LOGAN, OUR GUEST CULTURE GUY!**

Scab

Symptoms of scab are rather varied; however, it usually appears first as a tiny, water-soaked, and often raised area on the underside of the leaf. These spots enlarge and may become corky, brown in color, and of irregular size and shape. The condition may also appear on the top of the leaf.

Scab is a physiological condition associated with excess moisture or fluctuations of moisture from too high to too low. There is no biological agent associated with this condition and chemical sprays are ineffective. It is believed that improvement of drainage and growing conditions are the best possible controls.



Sunburn

Sunburn or sunscald appears as yellowish or bronzed areas on the upper side of the leaves with severely affected areas turning brown. These brown areas nearly always are interveinal and appear in the center of the leaves as opposed to salt injury which appears at the leaf margins. It is especially seen on plants with virus variegation in the foliage or when plants are moved from shade to sunshine. Some varieties are more susceptible than others.

Salt

Salt injury is characterized by browning and death of

the leaf tissue beginning at the margins and progressing inward. Most often the injury will appear first on older leaves.

Too high a concentration of salts in the soil or in the irrigation water or the use of heavy doses of fertilizer coupled with inadequate irrigation will cause this condition. This problem will develop rapidly in container grown plants.

To prevent this condition, camellias should be planted in a medium with good drainage. An occasional heavy irrigation will help to leach away the excess salts.

(From the American Camellia Society website)

THIS 'N THAT

A new publication from the Southern California Camellia Society is available for purchase at our meetings. "Sun Camellias" is all about those fall blooming camellias "Sasanquas". The cost is \$10.00. It's an outstanding publication. See Gary at the meeting.

~~~~~

**2012 Rosalie Yee College Scholarship**

***The 2012 Rosalie Yee College Scholarship application will be available at our October through February meetings. The deadline is March 1, 2012. See Gary or Carol***

**UPCOMING SHOW DATES—  
2012 NORTHERN CALIFORNIA SHOW SCHEDULE  
MARK YOUR CALENDARS!**

|                                                                                     |                                                                                                                                                                                        |
|-------------------------------------------------------------------------------------|----------------------------------------------------------------------------------------------------------------------------------------------------------------------------------------|
| February 4<br><b>Flower of the Show: DESIRE</b><br><b>Exhibitor: Barbara Tuffli</b> | <i>Napa Camellia Society Show</i><br>Napa Senior Center, 1500 Jefferson Street, Napa, CA<br>Contact: Nancy McGowan-Russell, 707-545-7546                                               |
| February 11                                                                         | <b><i>Open—No Show</i></b>                                                                                                                                                             |
| February 18                                                                         | <i>San Francisco Peninsula Camellia Society Show</i><br>CAB Community Activities Building, 1400 Roosevelt Avenue<br>Redwood City, CA<br>Contact: Linda Kancev, 650-574-1220            |
| February 25                                                                         | <i>Camellia Society of Santa Clara County Show</i><br>Community Recreation Center, 969 Kiely Blvd., Santa Clara, CA<br>Contact: John Mendoza, 408-249-5696                             |
| March 3 & 4                                                                         | <i>Camellia Society of Sacramento Show</i><br>Memorial Auditorium, 1515 J Street, Sacramento, CA<br>Contact: Carol Schanz, 916-447-1969 or Don Lesmeister, 916-967- 8420               |
| March 10                                                                            | <i>Northern California Camellia Society Show</i><br>First Baptist Church, 2336 Buena Vista Ave., Walnut Creek, CA<br>Contact: Don Bergamini, 925-229-0775 or Bob Ehrhart, 925-937-0188 |
| March 17 & 18                                                                       | <i>Camellia Society of Modesto Show</i><br>Ernest & Julio Gallo Administrative Building,, Modesto, CA<br>Contact: Pete Warner, 209-576-0831 or Tony Miranda, 209-526-2197              |
| March 24                                                                            | <b><i>Open-No Show</i></b>                                                                                                                                                             |
| March 31                                                                            | <i>Mini Show, Broadway Plaza, Walnut Creek, CA</i><br>Contact: Don Bergamini, 925-229-0775 or Bob Ehrhart, 925-937-0188                                                                |



*Start thinking of how you can help at our Show in March! We start setting up on Friday at 9 in the morning and work till we are done...then on Saturday, after we all put our camellias out, we will need help with the Judge's luncheon, cleaning up after judging, helping with plant sales, the Information Booth, and just greeting guests who come in to take a peek at our beautiful camellias. The Hostess Table will need help handing out programs and selling buttons. On Sunday afternoon we need all hands on deck to tear down the show...that's the easy part! Maybe the Gov will show up again!*

### JUDGES/CAMELLIA FRIENDS LUNCHEON AT OUR SHOW!

It's just not for judges anymore!! If you would like to attend the luncheon, please let Joanne Logan who is signing judges up, or Julie Vierra know so we can sign you up. All you need is \$20, preferably **the sooner the better** so we can put you on the guest list. Once again Burke's Family Catering will be doing our catering. They did a wonderful job last year. We will be having salad, beef tips with gravy, baked chicken, garlic mashed potatoes, rolls, and two desserts. Coffee, sodas and water will be provided. Call Julie: 916-371-2174. I'll put you on the list.



### POEM CONTEST FOR 2012

*Once again we will have our poem contest. Pen a poem and give it to one of the board members. He/she will give it to the people who will be judging the poem contest. At the April Luncheon we will announce the winner.*

### PHOTO CONTEST



*Start looking around for some camellia shots for our Show! The categories this year are:*

- Section #1. Best Single Camellia
- Section #2. Best Camellia(s) in a landscape
- Section #3. Best Camellia(s) with a child or pet in the photo
- Section #4. Best Camellia(s) with adult(s) in the photo
- Section #5. Humorous Camellia photo

#### **RULES:**

1. Contestants must be amateur photographers & a **member in good standing of any Camellia Society.**
2. Contestants may enter in any **4** of the **5** categories. Please, only one entry per Family in each category.
3. All entries must be **8 x 10**, vertical or horizontal, and displayed in an **11 x 14 Black mat.** (Mats available at art stores, Michael's photo shops, etc.)
4. Entries must have the photographer's name, address & phone number on the back of each photo. It should not be visible from the front.
5. Contestants need to fill out a Camellia entry card to submit with each photo. These are completed the same way as if you were entering a bloom. Example: Front of card: Section No 1, Variety Single Bloom. Inside of card need only be exhibitors name and address.
6. All photos, with completed entry cards, should be placed in the correct photo section by **10:30 a.m., Saturday, March 3, 2012.**
7. Photos will be judged on the overall quality of the composition with emphasis on the Camellia bloom(s).



### *Hostess Help*

*If you can help with the monthly snacks, please see Susanne Dell at our meetings or give her a call at 916-474-0356! Thanks!*

## BOARD MEETING DATES

ALL MEMBERS ARE WELCOME TO ATTEND!

March 6, 2012

Julie Vierra

April 3, 2012

Bob & Joanne Logan



The Nominating Committee will present it's prospective slate of officers at the February meeting. We will take nominations from the floor. If there are none, we will filibuster until someone says "I give!! and will do it!! We need help with filling the Second Vice President position. This is the position currently filled by Gary Schanz. The job description involves the following:

Shall conduct the monthly plant drawing at the Society meetings;

Maintain an adequate plant inventory (ordering the plants for the meetings and plant sale at the Show and housing the plants\*);

Be assistant Show Chairman;

Be willing to accept duties assigned by the President for the benefit of the Society.

\*We are willing to help you out in these areas

**PLEASE THINK ABOUT JOINING OUR BOARD AND HELPING OUT! WE DON'T BITE!**

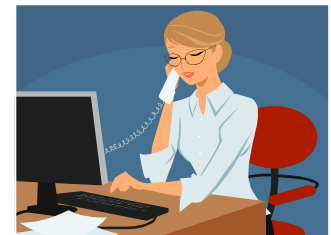
Please call Bob Christopher our Nominating Committee chair: 961-5073 or Carol Schanz 447-1969

**PLEASE CALL IF YOU HAVE QUESTIONS!**

### **Newsletter Information**

Articles for the Camellia Times are due at the board meeting date, the first Tuesday of every month. If you have questions or ideas, please just call or email me.

- Julie Vierra
- 916-371-2174
- j4sfgiants@sbcglobal.net





*Camellia Society of Sacramento*  
*C/O 1048 Longcroft Street*  
*West Sacramento, Ca 95691*